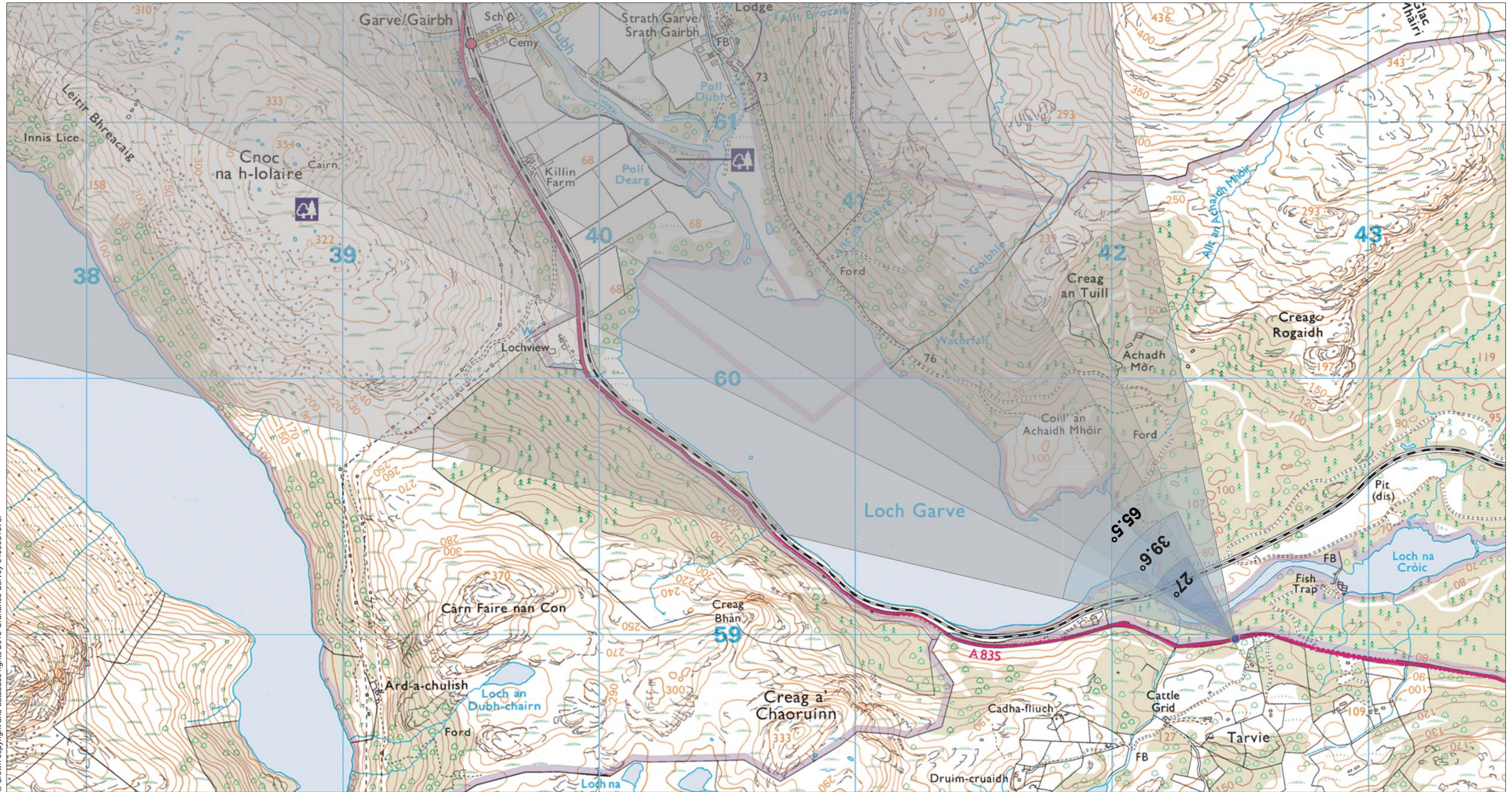
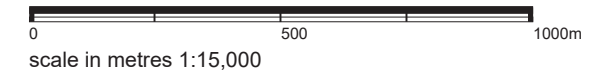


Viewpoint 3: A835, Garve Bridge



© Crown copyright and database rights 2018 Ordnance Survey 0100031673.

Grid Ref: 242481 858984 Distance to nearest turbine: 3.646km AOD: 12.940m



This viewpoint is located on the A835 between Garve and Rogie Falls, to the west of the turn-off to Tarvie and to the immediate west of the south-bound layby.

<p>THC Viewpoint 3 A835, Garve Bridge Fig 9.35</p>
<p>Lochluichart Wind Farm Extension II EIA</p>

Extent of 50mm single frame image



Photomontage

© Crown copyright and database rights 2018 Ordnance Survey 0100031673.

Viewpoint 3: A835, Garve Bridge

Distance to nearest turbine: 12.940km

Camera: EOS 5D Mark II

Focal length: 50mm vertical (27°) x 28mm horizontal (65.5°)

Camera height: 1.5m

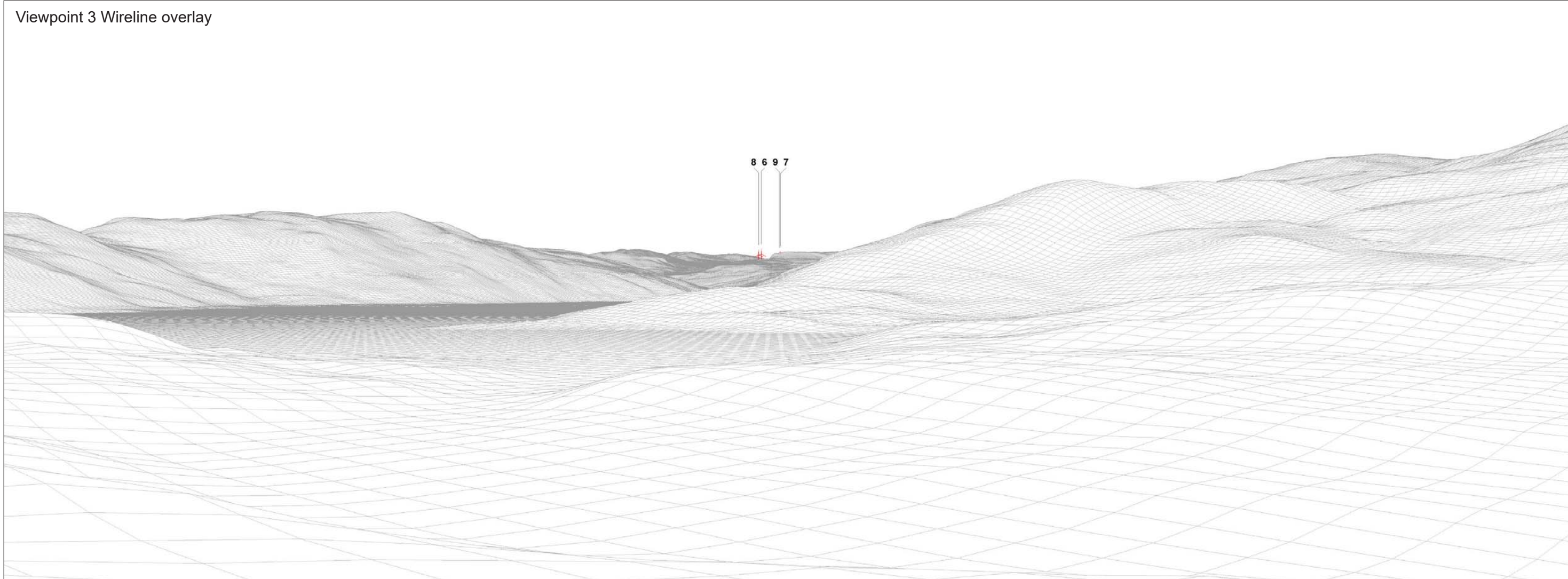
Date: 16/05/18

Time: 13:38

The images contained on this page and the following two pages are not representative of scale and distance from the actual Viewpoint and show the wind farm development in its wider landscape context only.



Viewpoint 3 Existing view

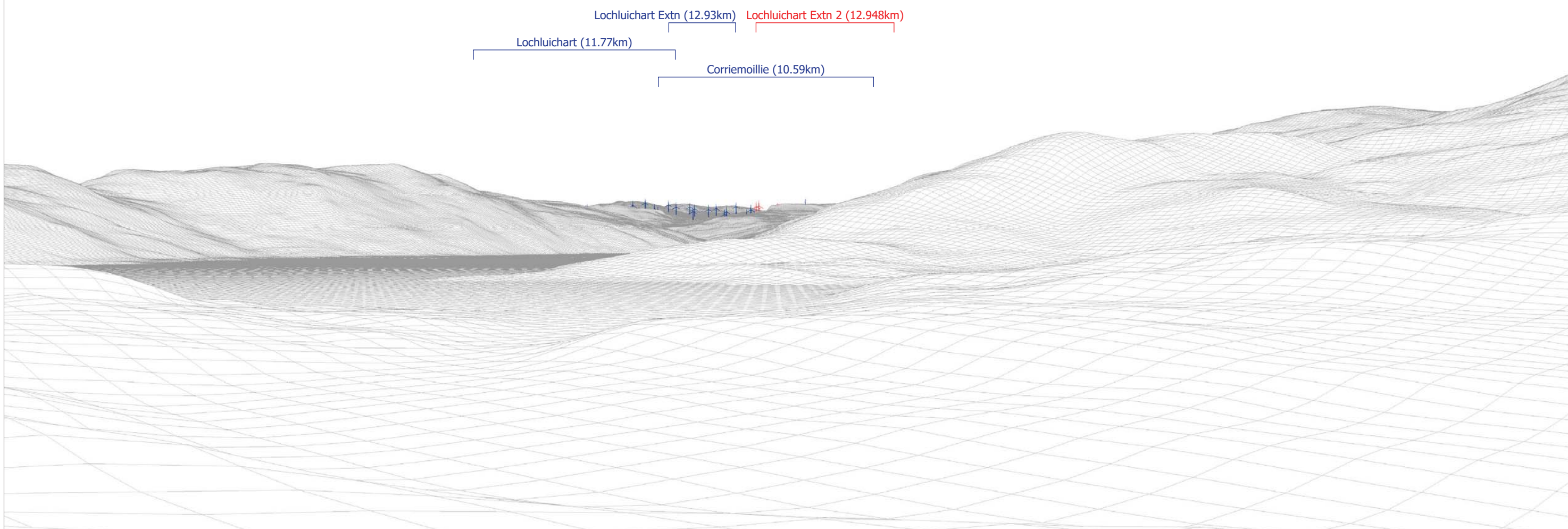


Viewpoint 3 Wireline overlay



Viewpoint 3 Existing view

Viewpoint 3 Cumulative Wireline. Application turbines in red, operational / under construction in blue, consented in purple and application in orange.





© Crown copyright and database rights 2018 Ordnance Survey 0100031673.

Viewpoint 3: A835, Garve Bridge

Distance to nearest turbine: 12.940km

Camera: EOS 5D Mark II

Focal length: 50mm

Camera height: 1.5m

Date: 16/05/18

Time: 13:38

When viewed at a comfortable arm's length, this image is representative of the maximum field of view of clear vision but is not representative of scale and distance.



© Crown copyright and database rights 2018 Ordnance Survey 0100031673.

Viewpoint 3: A835, Garve Bridge

Distance to nearest turbine: 12.940km

Camera: EOS 5D Mark II

Focal length: 75mm

Camera height: 1.5m

Date: 16/05/18

Time: 13:38

This image should be viewed at a comfortable arm's length (approx. 500mm).